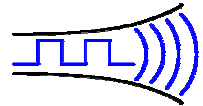


**NEW**

# Radiometrix

Hartcran House, 231 Kenton Lane, Harrow, HA3 8RP, England

Tel: +44 (0) 20 8909 9595, Fax: +44 (0) 20 8909 2233



**TDL2I**

**21 August 2006**

## TDL2I - RS232 Interface Board

***TDL2I interface board enables a cable free transparent data link between RS232 ports without any additional interface circuitry.***



*Figure 1: TDL2I-433-9*

The interface board features an on board TDL2A-433-9 OEM serial modem, MAX232 RS232 driver, 9 way D connector, 5V voltage regulator and SMA RF connector, hence requires just a Voltage supply to power up and operate without any additional interface circuitry. The TDL2A modules would be soldered directly on to the interface board for better grounding and to improve RF performance. The helical antenna and the SMA connector shown are optional. User could also use a two pin terminal block instead to mount a 1/4 whip antenna made of piece of wire or metal rod.

### ***Range of Features***

- RS232 driver and DB9F connector for direct interface to PC serial port
- Serial modem baud rate at 9600bps (half-duplex)
- Addressable point-to-point
- 5 serial select wideband channels
- Access to internal diagnostic/Test modes using HyperTerminal
- On board SMA antenna connector
- Signal LED for visual indication of valid code received
- Setup is simple as Plug-and-Play
- Set-up and configuration using HyperTerminal
- Conforms to EN 300 220-3 and EN 301 489-3
- Size: 61mm x 33mm (excluding helical antenna length of 55mm)

### ***Applications***

- Handheld / portable terminals
- PDAs, organisers & laptops
- Industrial telemetry and telecommand
- In-building environmental monitoring and control
- Remote data acquisition system, data logging
- Fleet management, vehicle data acquisition

## ***Configuring the TDL2I***

In order to use all the functions embedded in the on board TDL2A modem, the user must be aware of the setup /programming facility, which allow different addresses and frequency channels to be set up, and if necessary accesses diagnostic test modes.

The TDL2I is programmed through the same RS232 port that is used for sending/receiving data. An RS232 terminal emulator (such as Aterm or HyperTerminal) is an ideal tool.

Connect the TDL2I directly (or via serial straight through cable) to the PC serial port.

To enter program mode, insert the PGM jumper (to pull the SETUP pin of TDL2A low) and run the PC HyperTerminal program. In this mode the radio link is disabled, but characters sent (at 9600 baud, as normal) to the unit are echoed back on the RXD pin.

*The HyperTerminal should be set with the following settings.*

9600 baud RS232, 8 bit data, no parity, 1 start bit, 1 or 2 stop bits. No flow control.

The unit will only respond to certain command strings:

**ADDR0** to **ADDR7** <CR><LF>            These commands set up one of 8 unique addresses. A TDL2I will only communicate with a unit set to the same address.

**CHAN0** to **CHAN4** <CR><LF>            These commands select one of 5 preset channels

A TDL2I will only communicate with a unit set to the same address and the same channel.

Address and channel numbers are stored in volatile memory. On power-up the TDL2I reverts to the default in EEPROM (as supplied this is always address 0 and Channel 0)

**SETPROGRAM** <CR>            Writes the current set address into EEPROM as the new default.  
A tilde character (~, ascii 126dec) sent by the unit indicates end of EEPROM write sequence

(these commands are normally only used for factory diagnostics)

**NOTONE** <CR>            Transmit unmodulated carrier

**LFTONE** <CR>            Transmit carrier modulated with 8KHz squarewave

**HFTONE** <CR>            Transmit carrier modulated with 16KHz squarewave

**#** <CR>            Transmitter off

A Carriage Return '<CR>' (00Dhex) should be entered after each command sequence to execute it. Releasing the SETUP (by removing the PGM jumper) to high state returns the TDL2I to normal operation

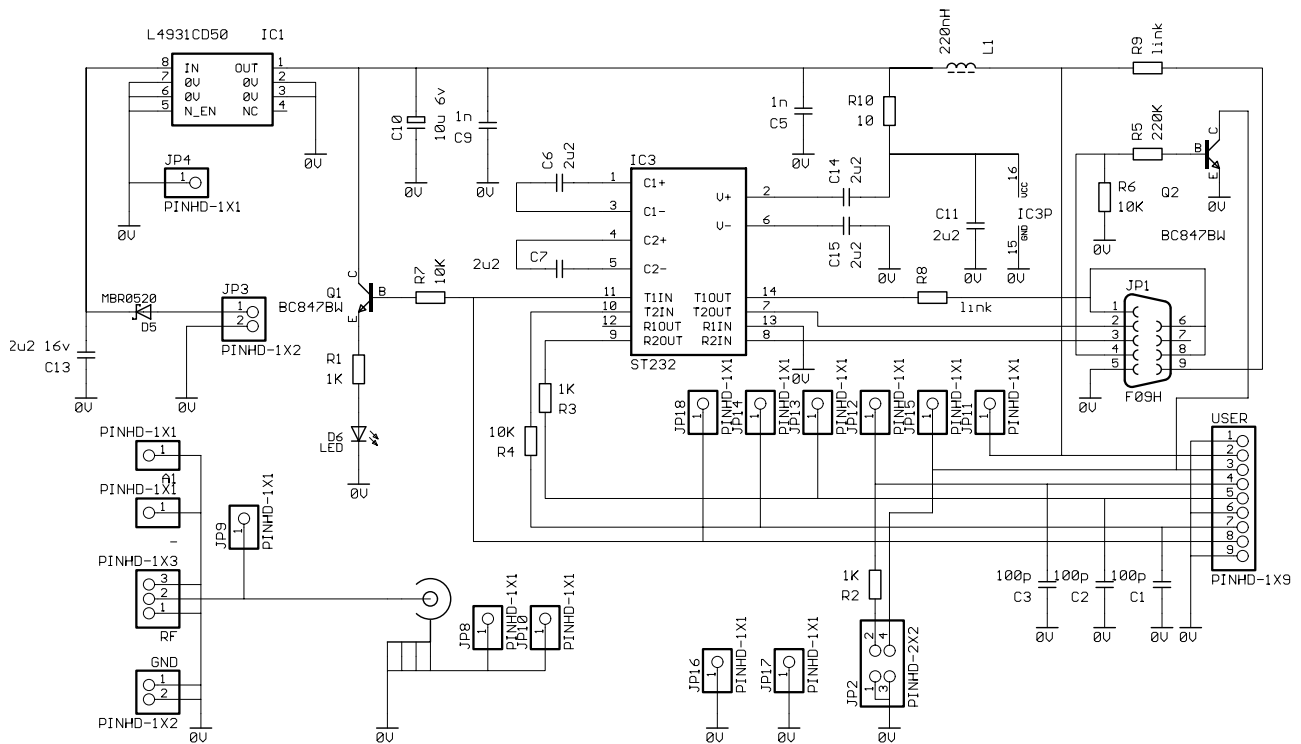


Figure 2: Schematic diagram of TDL2I

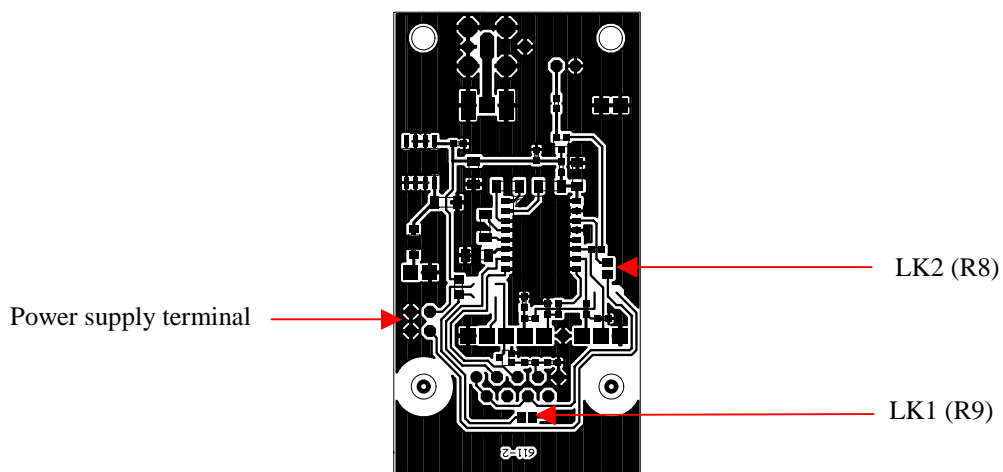


Figure 3: PCB layout of TDL2I (bottom view)

On-board regulator (L4931) can supply up to 250mA current at 5V.

R9 (LK1) connects pin 9 (Ring Indicator) on the D type to the 5V, which enables any external host to be powered from pin 9 (+5V DC) and pin 5 (GND). Certain CCD barcode scanner can make use of this feature, eliminating the need for additional external power adaptor.

R8 connects STATUS (data ready, via an RS232 buffer) to DCD, DSR and CTS. Not linking this jumper (LK2 at the back of the board) saves power.

The SIG LED is provided for visual indication of STATUS data ready. This LED would lit when a valid data is present in the receive buffer.

# **Radiometrix Ltd**

**Hartcran House  
231 Kenton Lane  
Harrow, Middlesex  
HA3 8RP  
ENGLAND  
Tel: +44 (0) 20 8909 9595  
Fax: +44 (0) 20 8909 2233  
sales@radiometrix.com  
www.radiometrix.com**

## **Copyright notice**

This product data sheet is the original work and copyrighted property of Radiometrix Ltd. Reproduction in whole or in part must give clear acknowledgement to the copyright owner.

## **Limitation of liability**

The information furnished by Radiometrix Ltd is believed to be accurate and reliable. Radiometrix Ltd reserves the right to make changes or improvements in the design, specification or manufacture of its subassembly products without notice. Radiometrix Ltd does not assume any liability arising from the application or use of any product or circuit described herein, nor for any infringements of patents or other rights of third parties which may result from the use of its products. This data sheet neither states nor implies warranty of any kind, including fitness for any particular application. These radio devices may be subject to radio interference and may not function as intended if interference is present. We do NOT recommend their use for life critical applications.

The Intrastat commodity code for all our modules is: 8542 6000

## **R&TTE Directive**

After 7 April 2001 the manufacturer can only place finished product on the market under the provisions of the R&TTE Directive. Equipment within the scope of the R&TTE Directive may demonstrate compliance to the essential requirements specified in Article 3 of the Directive, as appropriate to the particular equipment.

Further details are available on The Office of Communications (Ofcom) web site:

<http://www.ofcom.org.uk/radiocomms/ifi/>

*Information Requests  
Ofcom  
Riverside House  
2a Southwark Bridge Road  
London SE1 9HA  
Tel: +44 (0)845 456 3000 or 020 7981 3040  
Fax: +44 (0)20 7783 4033  
information.requests@ofcom.org.uk*

*European Radiocommunications Office (ERO)  
Peblingehus  
Nansensgade 19  
DK 1366 Copenhagen  
Tel. +45 33896300  
Fax +45 33896330  
ero@ero.dk  
www.ero.dk*